

[View this email in your browser](#)



What's Included In This Edition:

Schwimmer Script - Sharing the "Voices of the Quality Institute" on New Jersey's Most Pressing Health Care Issues

Take Five Interview - Emily Davies, MPA, Policy Fellow at the New Jersey Health Care Quality Institute

Linda Schwimmer Named Sheila Y. Oliver Legacy Honoree

Register to Attend NJ's First Oral Health Conference on 8/7

What We're Reading



Sharing the "Voices of the Quality Institute" on New Jersey's Most Pressing Health Care Issues

This spring, we surveyed our members and asked, "What is the top health care issue facing New Jersey?" Our members — who face the real-world challenges of our health care system — shared their insights and coalesced around six pressing issues. Next, at our Spring Conference, *Shaping the Future: Health Care Priorities for New Jersey's Next Governor*, our members gathered for table-top discussions and focused on actionable solutions on those issues.

Today, I'm proud to share the result of that work: **[Voices of the Quality Institute: Health Care Priorities for 2025 and Beyond](#)**. This paper captures the key issues and proposed solutions from our members. We are making the paper public and hope you will use and share it within your organizations. Our Quality Institute members come from every sector of health care and I appreciate that we can come together, look beyond our individual organizational priorities and explore solutions that improve health care for everyone. The paper reflects the many views and ideas from our diverse membership.

Additionally, the Quality Institute leadership, drawing on input from our members, created a more [targeted document](#) for the two candidates running for New Jersey governor, which conveys the Quality Institute's top health care priorities and recommendations for the next administration. The two documents include very similar priorities and will create the foundation for our policy work this year and beyond. With major changes at the federal level, state-level decisions, and spending have never been more critical.

As members, your voices are essential. Reading everyone's concerns and priorities reminded me, once again, that we share a common core set of values...

[Read Full Story](#)

TAKE FIVE INTERVIEW

Emily Davies, MPA
Policy Fellow, New Jersey Health Care Quality Institute



Interviews with members, influencers, and noteworthy people

Emily Davies is a Policy Fellow at the Quality Institute.

Interview Sneak Peek: *What will be your initial areas of focus at the Quality Institute?*

My focus will be on the project, "A Clearer Path to Care: Mapping New Jersey's Children's Mental Health System." It's a statewide initiative to better understand and then improve the mental health system for children in our state. The Quality Institute, with funding and partnership from the [New Jersey Department of Children and Families \(DCF\)](#), is leading the project.

The goal is to provide a comprehensive overview of how children and youth access mental health care in New Jersey. What services are available? What are eligibility requirements and payment limitations? We want to highlight where the system functions well — and identify gaps, duplication, and disconnects. The goal is to use data to create a visual journey — and then make recommendations to strengthen the system...

[Read Full Interview](#)



SHEILA Y. OLIVER LEGACY BRUNCH

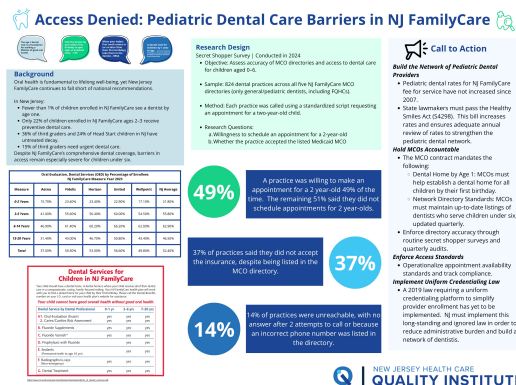
Linda Schwimmer Named Sheila Y. Oliver Legacy Honoree

We are excited to announce that Linda Schwimmer, President and CEO of the Quality Institute, will be honored at the [2nd Annual Sheila Y. Oliver Legacy Brunch](#). The event will be on [Saturday, July 26, from 11 a.m. to 3 p.m.](#) at the [Valley Regency](#) in Clifton. Thank you to the [Sheila Y. Oliver Civic Association](#) for recognizing Linda's dedication to advancing and improving health care in New Jersey. Congratulations to all the women leaders who are continuing Lt. Governor Oliver's legacy.

ATTEND NJ'S FIRST ORAL HEALTH CONFERENCE, 8/7



The Quality Institute will outline the barriers to children's oral health care at the [State of New Jersey's Inaugural Oral Health Conference](#) taking place on [Thursday, August 7, from 8 a.m. to 5 p.m.](#) at the [Robert Wood Johnson Foundation](#) in Princeton, with both in-person and virtual options available. We invite you to stop by our poster to learn about our [Secret Shopper Survey of Medicaid Dental Directories](#), and discover how you can take action to help improve children's oral health access across New Jersey.



Register Now

WHAT WE'RE READING

[I Was Laid Off from CDC. Here's Why We Need to Bolster State and Local Supports to Protect Public Health](#), *Millbank Memorial Fund*: In this blog, Micaela Camozzi, MPH, detailed her experience serving as a public health analyst at the [Division of Violence Prevention](#) within the [Injury Center](#) at the [Centers for Disease Control and Prevention](#) (CDC). Camozzi argues for strengthening state and local public health infrastructure to build resilience and ensure communities remain protected regardless of federal policy shifts.



For information on how to join, please contact Virginia Tesser at vtesser@njhcqi.org.

To learn more about our current initiatives, please visit our website at www.njhcqi.org.
Copyright 2025 * | NJHCQI, All rights reserved.*

Our mailing address is:

New Jersey Health Care Quality Institute
P.O. Box 2246, Princeton, New Jersey 08543

Want to change how you receive these emails?

You can [update your preferences](#) or [unsubscribe from this list](#).