

A Clearer Path to Care: Mapping New Jersey's Children's Mental Health System

*A Statewide Initiative to Strengthen Access, Coordination, and
Equity in the System of Care*

The [New Jersey Health Care Quality Institute](#), with funding from the [New Jersey Department of Children and Families \(DCF\)](#), is leading a statewide initiative to map and improve the New Jersey Children's Mental Health System of Care.

The project will provide a comprehensive overview of how children and youth access mental health care in New Jersey, including available services, the delivery of care, eligibility requirements, and payment limitations. It will highlight where the system functions well, as well as identify gaps, duplication, and disconnects, with the goal of making care easier to navigate and better coordinated for families across the state.

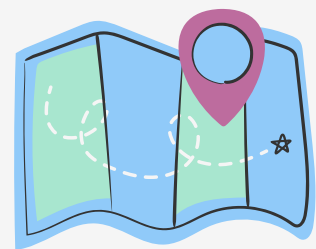


To inform the work, the Quality Institute is engaging families, providers, community organizers, and system administrators through interviews and focus groups across Northern, Central, and Southern New Jersey. Findings will shape a visual journey map and policy recommendations to help decision-makers and agency leaders strengthen the system of care.

Guided by DCF and a multi-stakeholder Advisory Committee, the project benefits from shared expertise and feedback. The Committee meets monthly to review drafts, share insights, and ensure that the final products reflect the real-world needs and priorities of families and providers.

Launched in early 2025, the project is scheduled to conclude in mid-2026, with the release of the landscape map and policy recommendations to inform improvements in children's mental health care across New Jersey.

For more information about the Children's Mental Health Mapping initiative, please contact Julie DeSimone, LSW, at jdesimone@njhcqi.org or O: **609-452-5980**.



**Children's Mental
Health Mapping**



NEW JERSEY
HEALTH CARE
**QUALITY
INSTITUTE**