



NEW JERSEY
HEALTH CARE
**QUALITY
INSTITUTE**

ANNUAL REPORT

YEAR 2022



Gold
Transparency
2023

Candid.



MESSAGE FROM THE PRESIDENT & CEO

Dear Quality Institute Members,

In 2022, we brought together our members and trusted partners and made a significant impact on health care in New Jersey and beyond. We celebrated our 25th anniversary and are humbled that so many of you have been working with us since the Quality Institute's inception. Our members propel our work, and we are proud of what we've accomplished together. We look forward to another 25 years of working with you to improve the safety, quality, and affordability of health care for everyone.

Sincerely,

Linda Schwimmer



ABOUT US



OUR MISSION

Improving the safety, quality, and affordability of health care for everyone.

PRESIDENT & CEO

As President and CEO of the New Jersey Health Care Quality Institute, Linda Schwimmer, JD, drives policies that advance health care safety, access, and affordability. She pursues change that improves the health care system and overall health and wellness for everyone. Under Linda's leadership, the Quality Institute is committed to bringing together competing interests to collaborate and innovate for the greater good.



*Linda Schwimmer,
President & CEO, the Quality Institute*

BOARD OF DIRECTORS



**Suzanne M. Miller,
PhD
Board Chair**



**Fred M. Jacobs,
MD, JD
Board Vice Chair**



**Charlene Holzbaur,
MBA
Board Secretary**



**Donald Bryan,
JD
Board Treasurer**



**Kemi Alli,
MD**



**Robert Andrews,
JD**



**Mary Campagnolo,
MD, MBA**



**Mary Ann
Christopher, MSN,
RN, FAAN**



**Heather Howard,
JD**



Gary Mann



**Linda Sloan Locke,
CNM, MPH, LSW,
FACNM**



**Christine Stearns,
JD**



**Linda Schwimmer,
JD**

OUR WORK



EDUCATION

- Hosted [virtual learning opportunities](#) for members and the public throughout the year on topics such as quality improvement, primary care, maternal infant health, social determinants of health, and building a health care workforce for the future.
- Released a poll on [telehealth](#) with Eagleton Center for Public Interest Polling that found that 60 percent of New Jersey residents have used telehealth. The poll also found that 70 percent of New Jersey residents reported being very likely or somewhat likely to continue using telehealth services for medical care in the future.



POLICY

- Launched the [Perinatal Episode of Care \(EOC\) Pilot](#) in partnership with NJ FamilyCare. The first annual pilot period will run through June 2023.
- Implemented an alternative payment model, in partnership with NJ FamilyCare, to support NJ [Integrated Care for Kids \(NJ InCK\)](#), a model that emphasizes community-based case management and screening for children and families who are at the highest risk for health complexity.
- Released [Delivering Better Care: Midwifery Practice in New Jersey](#), with support from The Burke Foundation. The report provides an overview of midwifery provider types, scope of practice, impact, educational pathways, and opportunities to improve both policy and practice around midwifery in NJ.
- Released the [Maternity Action Plan \(MAP\)](#) with support from the [Robert Wood Johnson Foundation](#). The MAP serves as a companion to the NurtureNJ strategic plan to align and elevate the plan toward sustainable policy change in New Jersey.
- Released the [Guidance Document to Recruit, Train, and Retain a Resilient and Diverse Health Care Workforce for New Jersey](#) with support from the Robert Wood Johnson Foundation. The *Guidance Document* includes input from more than fifty stakeholders to identify workforce issues that need to be addressed, current strategies that could be improved upon, and other potential strategies to deploy.
- Updated and released a [White Paper on Short and Long-Term Solutions to Improve the Small Employer Insurance Market](#).



COMMUNITY HEALTH

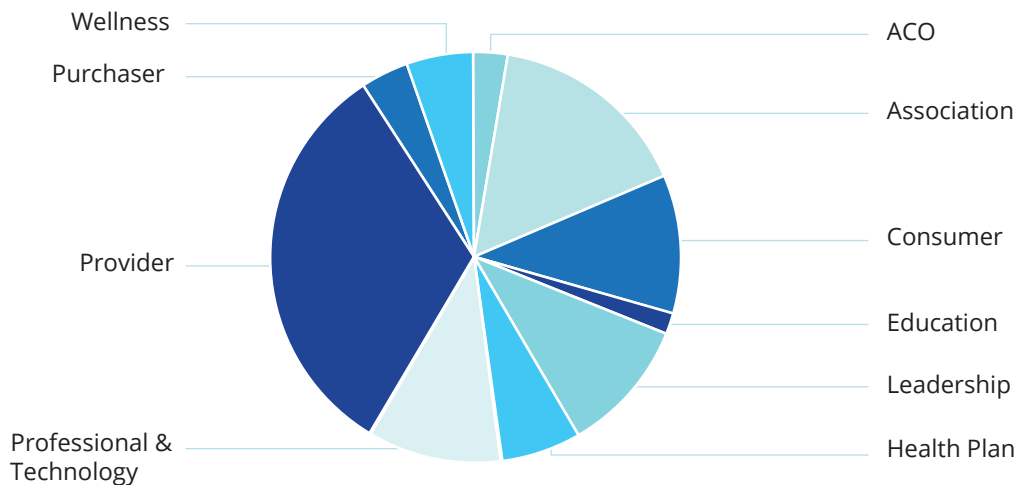
- [Mayors Wellness Campaign \(MWC\):](#)
 - Launched the Mayors Wellness Campaign [Mental Health Toolkit](#). Supported by [The Horizon Foundation for New Jersey](#), this educational resource provides strategies and program ideas for local leaders to address mental health needs within their communities.
 - Released two new MWC Tools: [Land Use Planning for Sustainable Healthy Communities](#) and [Food Security](#).
 - Hosted 19 focus groups, including 47 towns, to better understand programming needs and how the MWC can best support mental health efforts at the community level.
- [Conversation of Your Life \(COYL\):](#)
 - Launched our new COYL webpage, which focuses on resources for individuals and caregivers.
 - Participated in events throughout the state to provide important advance care planning information in communities of all ages across the state.
- Provided three Mental Health First Aid (MHFA) trainings to 42 community partners with support from The Horizon Foundation for New Jersey. During MHFA trainings, participants learn how to assist someone experiencing a mental health crisis and find out where to turn for professional help.



QUALITY IMPROVEMENT

- Launched the [TeamBirth NJ](#) initiative to improve maternal and infant health outcomes and inequities. In partnership with Ariadne Labs, the Quality Institute brought the shared decision-making initiative to three NJ hospitals and one birthing center: RWJBarnabas Health Cooperman Barnabas, RWJBarnabas Health Monmouth Medical Center, Virtua Voorhees Hospital, and Virtua Health's Midwifery Birth & Wellness Center.
- Supported quality teams in New Jersey hospitals to achieve the highest participation rate in the country in [The Leapfrog Group's Annual Hospital Survey](#).
- Released a [Quality Briefing](#) about hand hygiene best practices. This helpful resource includes information shared by three top-performing health systems to improve patient outcomes.

OUR MEMBERS



120 member organizations
across **10** councils

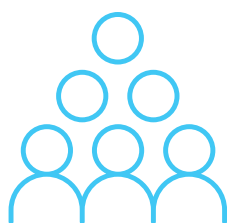


10

NEW MEMBERS



BY THE NUMBERS



200+

Celebrated our 25th anniversary with **200+** members and partners in a gathering where we reflected on our accomplishments and outlined goals for the future.



12

Welcomed **12** new [Quality Institute members](#).

Our [Mayors Wellness Campaign](#) Mental Health Tool Kit was downloaded **400+** times.

400+



Awarded **32** (2021) Healthy Town Designations from the MWC to communities across New Jersey.

1,100+



Our Maternity Action Plan (MAP) was downloaded **1,100+** times.

LOOKING AHEAD

Host four work sessions and one culminating event with key policy, community, and health system stakeholders to advance the [Maternity Action Plan](#). *This work is generously supported by the [Robert Wood Johnson Foundation](#).*



Launch the [Maternal Infant Health \(MIH\) Hub](#) to advance the implementation of the [Delivering Better Care: Midwifery Practice in New Jersey](#) recommendations for furthering Midwifery practice in New Jersey. *This work is supported by [The Burke Foundation](#).*

Develop a market scan and recommendations report on alternative payment models supporting comprehensive primary care that are currently in use in New Jersey. *This work is supported by the [State of New Jersey, Department of Human Services](#).*



Create a [MWC](#) resource guide on how to complete a local needs assessment to support program development and implementation. *This work is supported by [WellCare](#).*

Train community-based perinatal care providers in Mental Health First Aid. *This work is supported by [The HealthCare Foundation of NJ](#).*



Expand [TeamBirth NJ](#) to include four more organizations: Mary V. O'Shea Birth Center, Saint Peter's University Hospital, Robert Wood Johnson University Hospital, and Virtua Mount Holly Hospital.

Create new [COYL](#) resources to support mayors who want to bring the important advance care planning conversation to their communities. *This work is supported by the [Ho/Chiang Foundation](#).*



Increase the number of Ambulatory Surgery Centers that participate in the Leapfrog Group ASC Survey from four to at least 30.

Increase attention and awareness on the need to address and modernize the State's Small Employer Health Insurance Market to ensure that employers and their employees can get coverage no matter their gender, age, or health status.



Increase access to safe, equitable reproductive health services.

Maternity

LIST OF QUALITY INSTITUTE MEMBERS BY COUNCIL

Leadership Council

Eagleton Center for Public Interest Polling at Rutgers University
Horizon BlueCross BlueShield of NJ
Medical Society of New Jersey
New Jersey Department of the Treasury
NJ State Chamber of Commerce
NJ State League of Municipalities
NJ State Nurses Association
Parker Health Group
Planned Parenthood of Northern, Central & Southern NJ
RWJBarnabas Health*

ACO Council

Alidade
Camden Coalition of Healthcare Providers
Greater Newark Health Care Coalition
Health Coalition of Passaic County
Partnership Health Centers, LLC
Trenton Health Team

Association Council

American Physical Therapy Association of NJ
Garden State Pharmacy Owners
Health Care Association of New Jersey
Hospital Alliance of New Jersey
National Association of Benefits and Insurance Professionals (NABIP-NJ)
New Jersey Academy of Family Physicians
New Jersey Chapter of the National Association of Hispanic Nurses
NJ Association of Health Plans
NJ Family Planning League
Partnership for Maternal and Child Health
State and Local Government Benefits Association

Consumer Council

AARP of New Jersey
American Cancer Society
American Heart Association
Dress for Success Northern NJ
Goals of Care Coalition of NJ
Housing and Community Development Network of NJ
KinderSmile Foundation
March of Dimes
Medina Community Clinic
Mental Health Association in NJ
New Jersey Immunization Network-NJIN
New Jersey Policy Perspective
New Jersey Public Health Association
NJ YMCA State Alliance

Consumer Council (Cont.)

North Jersey Health Collaborative
Northern NJ Chapter of the Hospice and Palliative Nurse Association
Partnership for a Drug-Free NJ
Parker Family Health Center
Princeton Senior Resource Center
Robert Wood Johnson Foundation
The Burke Foundation

Education Council

Hackensack Meridian School of Medicine
Rutgers Center for State Health Policy
Rutgers Ernest Mario School of Pharmacy
Rutgers Robert Wood Johnson Medical School
St. George's University

Plan Council

AmeriGroup
AmeriHealth Caritas
AmeriHealth New Jersey
Clover Health
Humana
UnitedHealth Employer and Individual
WellCare

Professional & Technology Council

Community Health Law Project
Conventus Inter-Insurance Exchange
Family Health Initiatives
Fox Rothschild LLP
Kinship Health
Navvis
Teladoc
Unite Us

Provider Council

System Level (System Level memberships include multiple hospitals and other facilities.)*
Atlantic Health System*
Hackensack Meridian Health*
Inspira Health Network*
Jefferson Health*
St. Joseph's Health*
Virtua Health*
AtlantiCare Health Solutions
Axia Women's Health
Bergen New Bridge Medical Center
Capital Health Medical Center - Hopewell
CarePlus NJ
Catholic Charities, Diocese of Trenton

Provider Council (Cont.)

Central Jersey Family Health Consortium (CJFHC)
CentraState Medical Center
Children's Home Society of New Jersey
CompleteCare Management
Cooper University Hospital
DaVita
Englewood Health
Hackensack Meridian Carrier Clinic
HealthySteps
Henry J. Austin Health Center, Inc
Holy Name Medical Center
Legacy Treatment Services
Lifeline Medical Associates
Nemours Children's Health
Nurse-Family Partnership
Penn Medicine Princeton Health
Preferred Behavioral Health Group
Quest Diagnostics
Regional Cancer Care Associates LLC
Rutgers Behavioral Health Care
Saint Clare's Denville
Saint Peter's University Hospital
Salem Medical Center
Samaritan Life-Enhancing Care
Shore Medical Center
Summit Medical Group
The Center for Great Expectations
University Hospital
Vanguard Medical Group
VNA Health Group

Purchaser Council

NJ Education Association

Wellness Council

Bayer
Cannabis Education and Research Institute
Genentech
Organon
MM411
Novo Nordisk
Pfizer
Sanofi

As of March 2023



NEW JERSEY
HEALTH CARE
**QUALITY
INSTITUTE**

ANNUAL REPORT

YEAR 2022



Released March 2023.

New Jersey Health Care Quality Institute
P.O. Box 2246, Princeton, New Jersey 08543
609-452-5980 | njhcqi.org



Gold
Transparency
2023

Candid.