



NEW JERSEY HEALTH CARE QUALITY INSTITUTE

A BI-WEEKLY LOOK AT THE BUSINESS & POLITICS OF HEALTH CARE IN NEW JERSEY



PRESIDENT & CEO, LINDA SCHWIMMER

ICYMI: Resources to Strengthen Midwifery, Maternal Health, and the Health Care Workforce

At the Quality Institute, we want to make sure you haven't missed the important and actionable work we accomplished this busy spring and summer. Whether you're just back from vacation or looking for exceptional resources to continue improving health equity, advancing maternal infant health, or strengthening our health care workforce — we've got answers.

In May, in partnership with [The Burke Foundation](#), we released, [Delivering Better Care: Midwifery Practice in New Jersey](#). Midwives provide high quality well-woman and perinatal care and elevate health equity and improve outcomes. The report calls for systemic changes to diversify and strengthen the midwifery profession in our state. Since the report was released, we've continued the work with many of you and look forward to being a resource to advance and support the development of the midwifery profession. If your organization would like to be involved, reach out to our [Community Health and Policy Associate Armonie Pierre-Jacques, MPH](#), at apierrejacques@njhcqi.org.

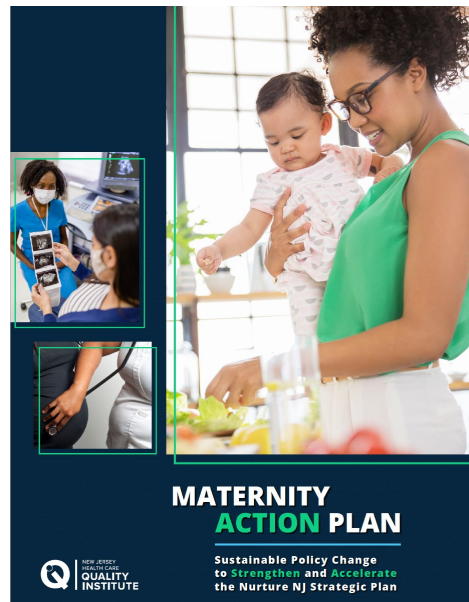
In July, we released the [Maternal Action Plan, or MAP](#), a holistic approach to reduce the unacceptable Black maternal mortality and morbidity rates in our state. The work was generously supported by the Robert Wood Johnson Foundation (RWJF). The MAP is a four-step policy guide to accelerate the implementation of the Nurture NJ Strategic Plan. The MAP guides foundations, state government, health care systems, health insurers, providers, community-based organizations, and advocates. For more information or to engage directly on MAP reach to our [Director of Policy, Kate Shamszad, MS, MPH](#) at kshamszad@njhcqi.org

Also in July, we released [**A Guidance Document to Recruit, Train, and Retain a Resilient and Diverse Health Care Workforce for New Jersey**](#). The Guidance Document, also generously supported by [**RWJF**](#), calls for a strategic plan to understand and develop the state's health care workforce as well as the need for greater demographic data to develop that plan. The Guidance Document explores and analyzes other states and platforms where health care workforce planning has been successfully implemented. As our nation and state ages and become more diverse, we must address the need for a vibrant and diverse health care workforce. Our members tell us that workforce capacity is one of their greatest challenges. We encourage you to read the Guidance Document and work with us to advance its recommendations. To learn more, read our latest [**op-ed in NJ Spotlight**](#), and reach out to our [**Chief Operating Officer, Tyla Minniear**](#) at [**tminniear@njhcqi.org**](mailto:tminniear@njhcqi.org).

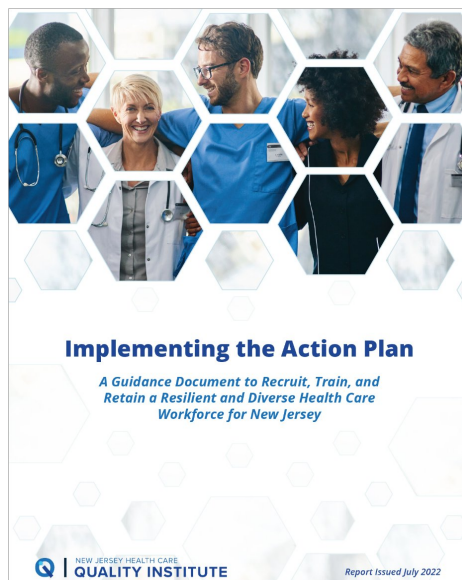
Each of our reports relied on the input, perspective, and experience of our members and others. We are grateful for their input and hard work. We know these documents are not easy beach reads for these hot summer days. But they provide paths forward to advance the mission we all share — improving the safety, quality, and affordability of health care for everyone.



In partnership with The Burke Foundation, we created a [**midwifery report**](#) that details the current state of midwifery in New Jersey and proposes state-specific recommendations to support increased access to these services.



We, in partnership with many partners and advocates, created the [**Maternity Action Plan \(MAP\)**](#) to provide a directional path forward in four critical ways to address New Jersey's maternal health crisis.



In our newest release, our [Guidance Document](#), we explain why New Jersey needs more publicly available demographic data on its health care workforce and what steps are needed for New Jersey to implement lasting change.



LORI FELDSTEIN

CEO AND EXECUTIVE DIRECTOR
OF THE GOALS OF CARE
COALITION OF NEW JERSEY

TAKE FIVE INTERVIEW

Interviews with members, influencers, and noteworthy people

Lori Feldstein, CEO and Executive Director of the [Goals of Care Coalition of New Jersey](#), a non-profit organization working to improve shared decision-making between health care providers and patients and their families. Goals of Care Coalition of New Jersey is a member of the [Quality Institute's Consumer Council](#) and a close partner in our [Conversation of Your Life \(COYL\)](#) initiative.

Interview Sneak Peek: *How do you see the importance of increasing education around end-of-life care for patients and providers, including your work with the Quality Institute's COYL program?*

Our organization and COYL both know there are misconceptions and inadequate knowledge that lead to apprehension among patients and family members. The lack of knowledge is a barrier to advance care planning and even palliative care and hospice care services. We know that a lot of people think palliative care and hospice care are the same thing. Many associate palliative care only with end-of-life care. Unfortunately, those misconceptions persist even in the provider community. We know a tremendous amount of education needs to be done.

Everyone feels better when we honor patients' wishes and ultimately deliver care that aligns most closely with their goals. Together with COYL, we've completed educational programs throughout New Jersey that are centered around changing the culture as it relates to this conversation. Together we've reached out to faith-based communities because we recognize these conversations are happening in churches, synagogues, mosques, and in Hindu temples. The faith community can be incredibly important in helping people get more comfortable with these conversations.

[Read Full Interview](#)

 NEW JERSEY HEALTH CARE
QUALITY INSTITUTE

**25th Anniversary
Celebration**



REGISTER NOW

Advancing Health Care Safety,
Quality, and Affordability

Picture from 2015

Quality Institute members and guests: You're invited to celebrate our 25th Anniversary from 5-7:30pm on Thursday, September 15th at the [Trenton Country Club!](#)

About This Event:

Please join us for drinks, light hors d'oeuvres, and conversation as we celebrate the 25th anniversary of the New Jersey Health Care Quality Institute. We look forward to seeing our members and invited guests, recognizing our accomplishments, and celebrating our Champions of Quality.

Champions of Quality Honorees:

- **Leah Binder**, President and CEO, The Leapfrog Group
- **David Knowlton**, Founder and former President and CEO, New Jersey Health Care Quality Institute
- **Judith Persichilli**, R.N., B.S.N., M.A, Commissioner, NJ Department of Health, Founder and former Vice Chair of the Board, New Jersey Health Care Quality Institute
- **Jennifer Velez**, Esq., SVP and General Counsel, Horizon Blue Cross Blue Shield of NJ, Former Commissioner, NJ Department of Human Services
- **Senator Joseph Vitale**, New Jersey Legislature

**This event is for Quality Institute members and invited guests only.*

Register for 25th Anniversary Event

Champions of Quality



Leah Binder,
President and CEO,
The Leapfrog Group



David Knowlton,
Founder & former
President & CEO,
New Jersey Health Care
Quality Institute



Judith Persichilli,
R.N., B.S.N., M.A,
Commissioner, NJ Department
of Health, Founder and former
Vice Chair of the Board, New
Jersey Health Care Quality
Institute



Jennifer Velez,
Esq.,
SVP and General Counsel,
Horizon Blue Cross Blue
Shield of NJ,
Former Commissioner, NJ
Department of Human
Services



**Senator
Joseph Vitale**,
New Jersey
Legislature

REPORTING ON PSI-90 MEASURES

A couple of months ago, we asked our members to sign onto The Leapfrog Group's letter to CMS, or to write their own letter, asking CMS to keep reporting on PSI-90 measures, a composite of ten serious preventable complications that kill 25,000 hospitalized patients each year.

Recently, we, and all of the other advocates for patient safety and transparency, won. Not only did CMS announce they will continue to publicly report on these measures, but they also re-enforced their commitment to transparency and more.

Thank you to everyone who helped us support The Leapfrog Group's efforts to protect quality and safety for everyone.

NEW MEMBER



**Kinship
Health**

Kinship Health

[Kinship Health](#) is a national organization whose mission is to develop and grow PACE programs in under-served markets to serve high-risk elderly in the community, as well as to help them avoid nursing home placement or unnecessary hospitalizations. Their goal is to enhance the quality of life and foster independence among seniors in the community by increasing access to and operating Programs of All-inclusive Care for the Elderly (PACE) programs. Their model of care prioritizes patient-centered decisions which are personalized, ethnically, and culturally sensitive. Their model is one of collaboration and enhancing the current continuum of care available for the elderly in their communities.



For information on how to join, please contact Virginia Tesser at vtesser@njhcqi.org.

To learn more about our current initiatives, please visit our website at www.njhcqi.org.

Copyright 2022 *|NJHCQI, All rights reserved.*

Our mailing address is:

New Jersey Health Care Quality Institute
P.O. Box 2246, Princeton, New Jersey 08543

Want to change how you receive these emails?

You can [update your preferences](#) or [unsubscribe from this list](#).